



UV-E measuring head type 1E.1W

UV-E sensitivity

Long UV radiation (above 323 nm) makes people tan and has positive effects on the human immune system. Shorter UV-radiation in contrast may cause irreversible damage and is listed in a recommendation by CIE (Commission Internationale de l'Eclairage) which summarizes all action spectra that may cause damage to the human skin.

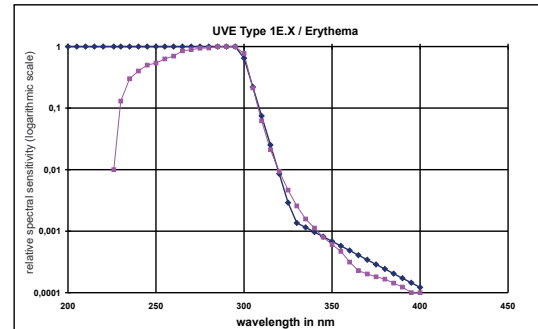
This recommendation is standardized in German DIN 5050.

A popular example is the UVI sunburn index.

UV-E measuring head type 1E.1W

The measuring head determines radiation in the UV-E spectral range (Erythema).

Measuring results are allowing immediate conclusions about medically and biologically relevant connections within this band of radiation. The measuring head is used in medicine, biological research, weather information and forecast systems, in climate research and for public information in general. The measuring head type 1.E1W features a weatherproof aluminum housing. The dome is made of quartz glass. The values are cosine corrected.

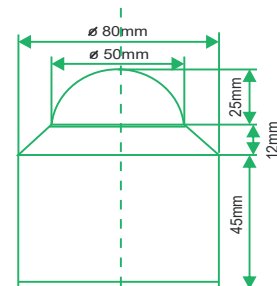


Technical specifications:

measuring range UV-E	0 - ca. 0.5 W/m ²
spectr. sensitivity UV-E	230nm - 310nm
sensor system	SiC interf. filter
max. of spectr. sensitivity	295nm
working temperature	-30°C - +60°C -22 - +140°F
signaloutput	0V - 5V/ 4 - 20 mA(negotiable)
power	+10V - +24V / 750µA
time to switch on	< 1 s
time to switch off	< 1 s
installation	2 screws M4 in the bottom
connector	bottom, downward
diffusor	PTFE
housing-dome	quartz
cosine correction	error f2 < +/-2%
linearity	< +/-1%
absolute error	< +/-10%
coeff. of temperature	0.1%/K
weight	400g 14 oz



Dimensions:



Specifications are subject to change without notice.

Indium Sensor
Virchowstr. 7
15366 Neuenhagen
Germany
Tel: +49(0)3342 80239
Fax: +49(0)3342 207886