



# INDIUM SENSOR

Elektronische Geräte für Industrie und Umwelt

## Global radiation measuring head type 7.1

### Global radiation

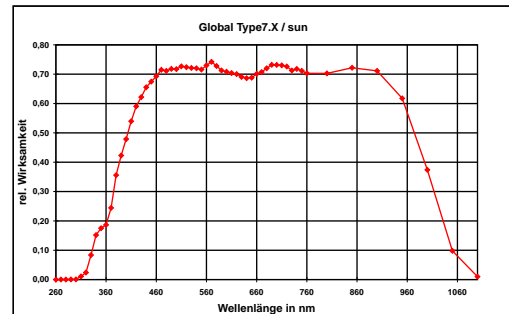
The complete direct and diffuse sun radiation hitting the ground is called global radiation. The spectral range extends from the short-wave range at 300 nm (UV-B) to the long-wave range at 5000 nm (IR). The radiation energy above 1000nm however is less than 10% only.

### Global measuring head type 7.1

The sensor is able to detect almost 90% of the sunlight in the range between 400 nm and 1100 nm and includes UV, VIS and some of IR.

Measuring results are allowing immediate conclusions about medically and biologically relevant connections by comparing them to other spectral ranges.

The measuring head may be used in medicine, biological research, weather information and forecast systems, in climate research and for public information in general. The aluminum housing is weatherproof. The dome consists of sized to fit quartz glass. Measuring results are cosine corrected.

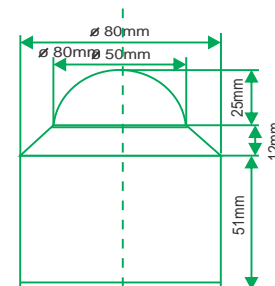


### Technical specifications

global measuring range	0 - approx. 1300 W/m <sup>2</sup>
spectral sensitivity	400 nm - 1100 nm
max. spectral sensitivity	780 nm
sensor system	Si + filter
working temperature	-20 - +80 °C   -4 - +180° F
signal output	0V - 5V/ 4 - 20 mA(adjustable)
power supply	+10 V - +18 V
installation	2 screws M4 in the bottom of the case
connector	downward
diffusor	PTFE
dome	optical glass
cosine correction	error f2 < 1.5%
linearity	< 1%
abs. error	< 10 %
residual voltage (E=0)	< 10 mV
weight	400g   14 oz

Specifications are subject to change without notice.

### Dimensions:



Indium Sensor  
Virchowstr. 7  
15366 Neuenhagen  
Germany  
Tel: +49(0)3342 80239  
Fax: +49(0)3342 207886